



MECHA

Controller C1

Quick Reference Guide

Support Forum:
<https://forum.nodalninja.com/>



Video Tutorials:
www.youtube.com/nodalninja



Updating Firmware to C1E_020XX

C1E_020XX is the second generation of firmware for MECHA. There is a major change in internal structure to accommodate more advanced features under development.

For example,

- Streamlined automatic pairing of multiple MECHA controllers in a local network or over the Internet.
- Zero Learning MECHA (zLM) mode to allow advanced users to help beginners and non-technical artists.
- Simplified inputs for sophisticated tasks.
- RAW interface for easy user customization and third party app integration.
- Movements/shoots based on Timeline Editor for precise motion control for videos, animations and still images.

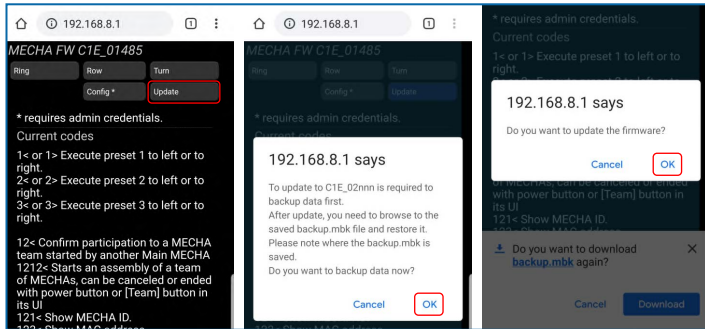
Notes

To update MECHA to C1E_020XX, you first need to update to the latest version of the first generation. Refer to this [guide](#) for detailed instructions.

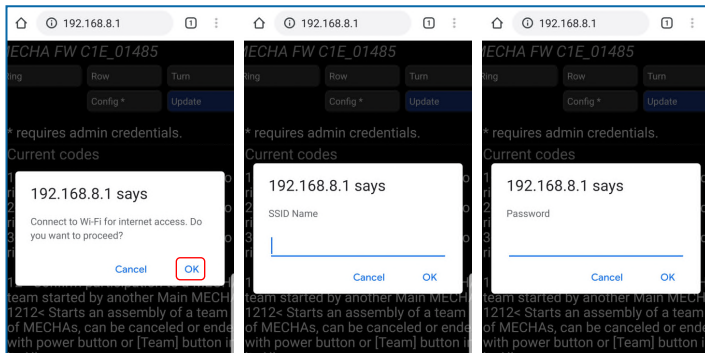


Updating Firmware to C1E_020XX

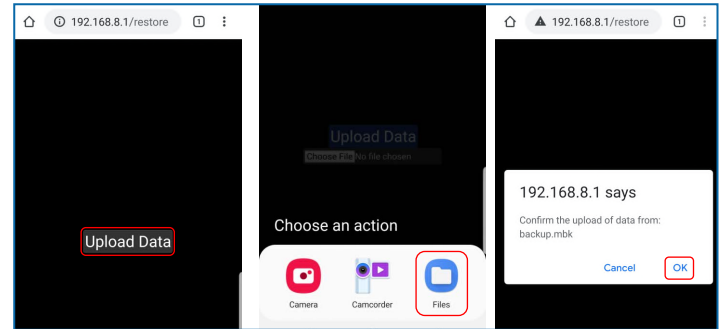
At MECHA [IP/new](#) page, select [\[Update\]](#) button. A dialog opens asking to back up existing settings and presets. Select **OK**. A [backup.mbk](#) file will be saved in the download folder specified by the browser. If a previous [backup.mbk](#) exists in the folder, the browser will ask if you want to download again. After backup is saved, a dialog opens asking to confirm the update.



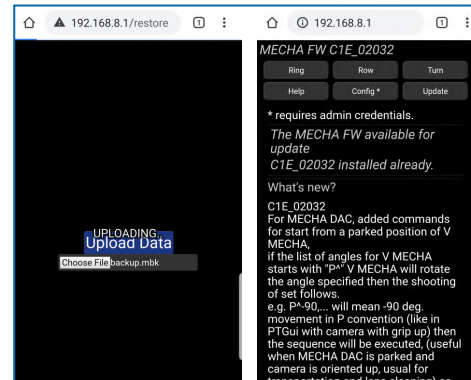
MECHA will use Wi-Fi credentials saved in the memory and try to connect to firmware server. If saved Wi-Fi network is not available, it will ask for new network SSID and password. Note they are case sensitive and beware of any extra space.



Once connected to server, MECHA download and install latest firmware. Then it asks to upload the saved backup file to restore previous settings and presets. Use preferred file manager to locate the file. If multiple versions exist, select the correct version. A dialog asks to confirm upload of the specified file. Select **OK** to upload or **Cancel** to reselect the correct file.



It can take while to upload and restore. When it finishes, it shows the latest firmware installed.



Congratulations!
Firmware updated to C1E_020XX.
Enjoy the latest features with more to come.