

---

# ***FANOTECH***

---

# Nodal Ninja

# ***MECHA***

E1 Rotator +  
Single Axis Controller C1

Package Content  
Body  
Features  
Basic Operation  
Info, Links & Specs

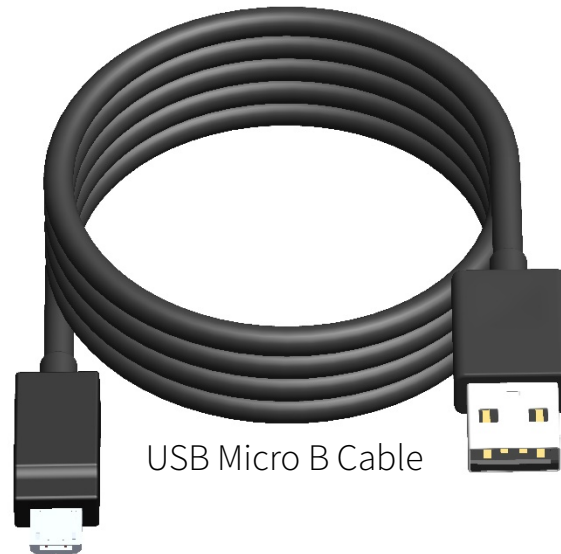
## QUICK REFERENCE GUIDE

Version 0.2.3 (Oct 27th 2019)

# PACKAGE CONTENTS



Mecha E1& C1



USB Micro B Cable



Shutter Cable

2.5 mm Hex Key



2.0 mm Hex Key



M3x5



M3x6



M3x5



M2.5x16



Springs x 2

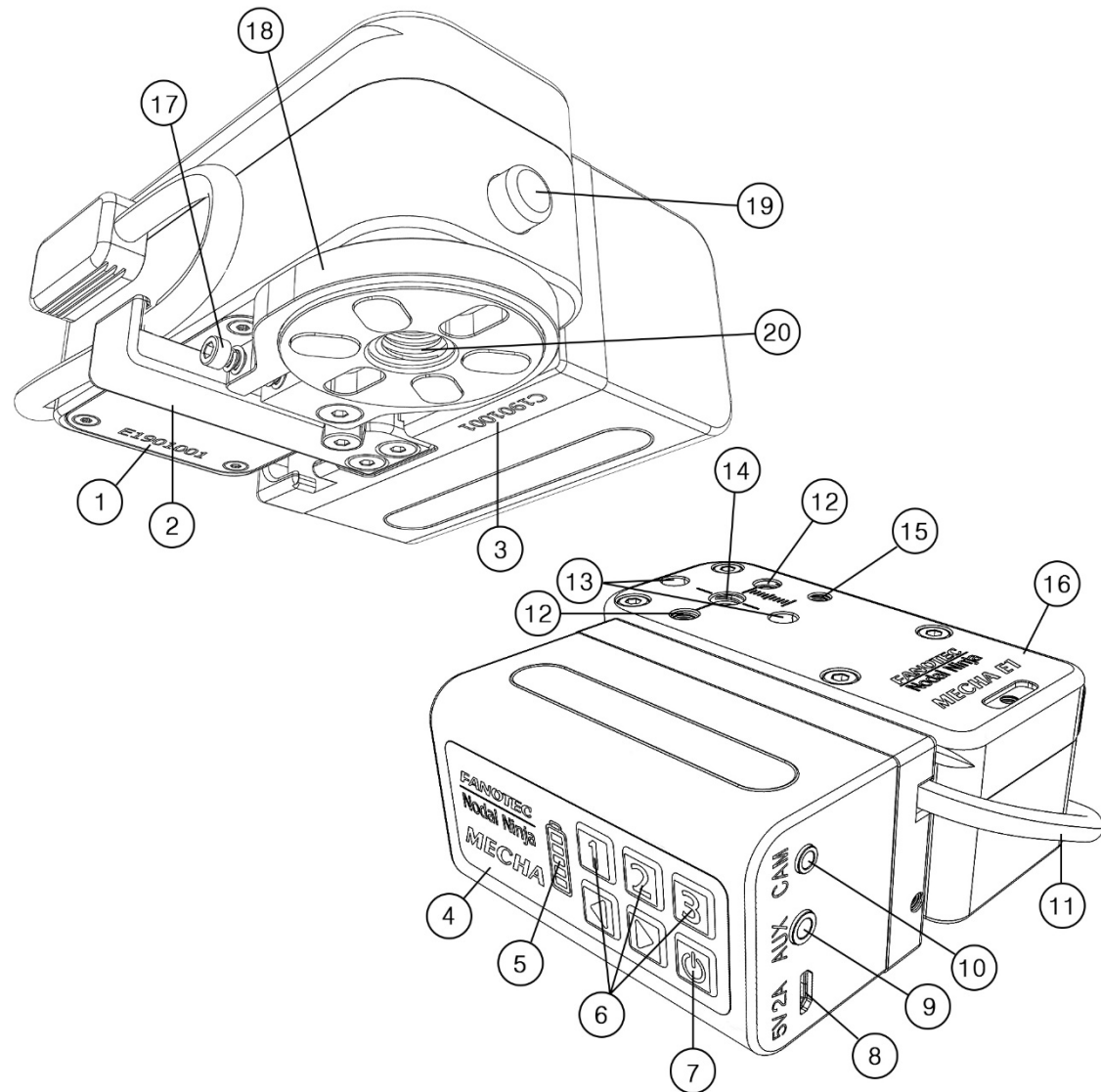


3/8" to 1/4" adapter



# BODY

1. Rotator Serial Number
2. C1-E1 Support Arm
3. Controller Serial Number
4. Single Axis Controller C1 (F9910)
5. Power / Status LED Indicator
6. Programmable Buttons
7. Power Button
8. Micro B USB Charging Port
9. Multi-Function AUX Port
10. Camera Trigger Port
11. Controller to Rotator Cable
12. M5 Sockets
13. Anti-Twist Sockets
14. 1/4"-20Socket
15. M4 Socket
16. Mecha E1 Rotator Module (F9900)
17. Friction Ring Tension Screw
18. Lower Rotator Friction Ring
19. Anti-Rotation Lock Button
20. 3/8"-16 Socket



# FEATURES

---

Mecha = Precision built with the highest quality components.

Use for consistent single row 360's (dual axis controllers coming soon).

Other uses include turntable, HDR bracketing, time-lapse video and later use with Fanotec Carbon Fiber Slide Rails and cables.

The rotators are modular and can be used with different controllers supporting 1 to 4 axis.

Mecha's features justify doing price comparisons against higher end units costing thousands of dollars.

Out the box Mecha is pre configured with 3 presets and ready to shoot.

Load 1 = executes 4 shots around.

Load 2 = executes 6 shots around.

Load 3 = executes 8 shots around.

The unit is able to operate with or without web browser controller.

Attach camera to Mecha by use of the sync cable.

Turn on, press #1 >(right arrow) , shooting sequence begins to the right begins with 4 shots around.

Turn on, press #2 < (left arrow) shooting sequence begins to the left begins with 6 shots around, etc.

Using the controller with Wi-Fi interface to a mobile/PC device browser offers access to over 50 tools for status displays, customizing shoots, and setting up presets as needed.

Some features include:

Assign a total number of shots around 2-360.

Rotate left or right.

Tool for testing No Parallax Point (NPP) in live view.

HDR bracketing of shots in a set (1-7, + custom)

Control Auto Focus time in milliseconds.

Set a delay for **W**ake up

Set a delay for **B**efore exposure

Set a delay for **E**xposure

Set a delay for **A**fter exposure

Rewind to initial position (useful to avoid cable wrap with some configurations)

On/off repeat number of sequences + length of delay between sequences.

Create up to 3 custom profiles which can be assigned to the 3 physical Buttons on controller, no need for an interface to use them.

Cancel operation smoothly.

Emergency stop.

Ability to take extra shots step by step for patching in a panorama.

Support for partial panoramas and repeated as desired.

Can operate both in AP or STA mode, allows the use in the studio or in the field as multiple stations some of which can be dedicated for use as a turntable, others for panoramas, and others for rail and video with upcoming accessories.

Turntable set with the desired speed (RPM) and smooth acceleration.

Visual feedback of the current shoot/position in set with time estimation until completion.

Firmware update is via WiFi through the Internet.

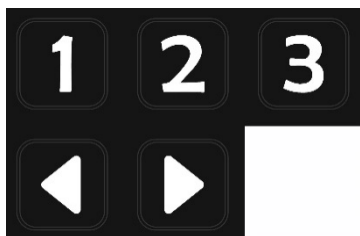
May be used with a power bank for extended use.

Gesture support for fine-tuning of the initial position or for extra shots.

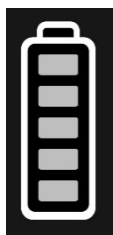
# BASIC OPERATION



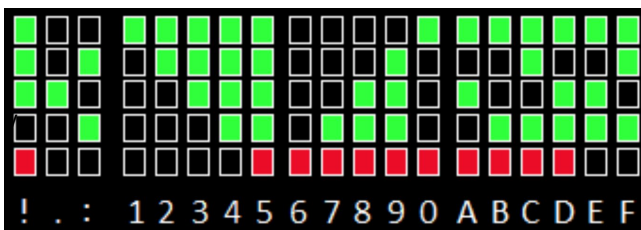
Power Button: Hold down for approximately 5 seconds to turn on/off. While turned on press briefly for battery status.



Presets buttons. Comes preprogrammed with:  
#1=4 stops, #2=6 stops, #3=8 stops.  
Arrows designate direction of rotation.  
symbol ">" = right arrow, symbol "<" = left arrow  
To execute a preset push buttons:  
1< or 1> left or right.  
2< or 2> left or right.  
3< or 3> left or right.



Power / Status LED Indicator  
The combinations of buttons will show the following:  
121< Show Mecha ID.  
123< Show MAC address.  
323< Show Full IP address.  
321< Show Last part of the IP address.



23< Disable/Enable motor. When the motor is disabled, the power LED will blink rarely, it blinks also in U.I.

32123< Update the firmware, if possible. Mecha needs to be connected to a WiFi with internet access before entering the code. It will show "..." if it cannot find any update, or "!!!" if Internet is not available for Mecha.



5V 2A = Micro B USB Charging Port. Plug in Micro BUSB cable to charge the Mecha. Use an appropriate power source. 5Volts 2Amp input.

AUX = Multi-function Auxiliary Port. Currently available function is shutter release confirmation by using signal from camera hot-shoe. Other functions will be available in the future.

CAM = Camera Port. Plug in a specific shutter cable for the camera in use. This allows for triggering the shutter automatically.



Make sure power is turned off before mounting on a tripod.

Anti-Rotation Lock Button. When mounting to a tripod depress the button allowing to tighten the Mecha. Once tightened make sure the button is not depressed.

# BASIC OPERATION- continued pg 2

Web APP connection via WiFi:

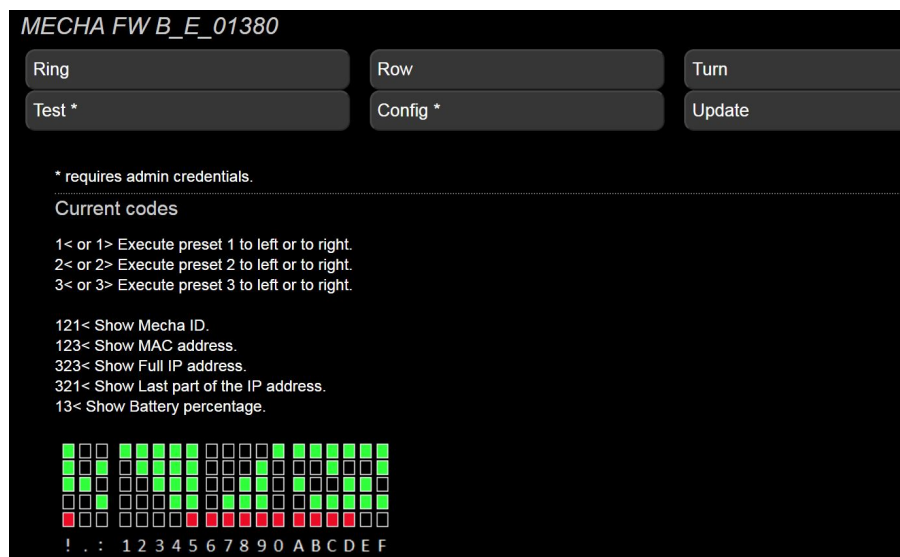
To connect to the web app:

Make sure the unit is turned on.

On a mobile device/PC select MECHA-XXXXXX in the WiFi network list.

Enter the password 12345678.

On the browser URL enter 192.168.8.1



Ring, Row and Turn buttons are the options for the type of images required.

Test and Config buttons requires admin credentials.

Update button is for firmware update. Follow the prompts to connect to a WiFi connection. When completed reboot the unit.

Sample page. (Ring page)

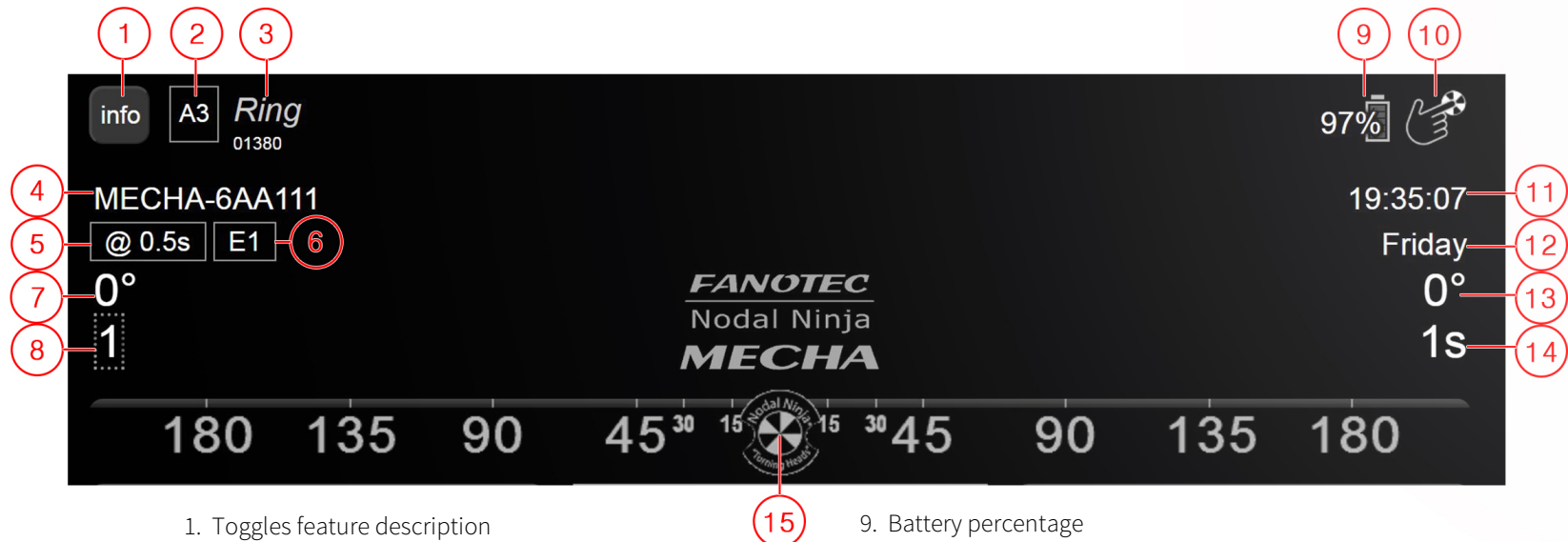


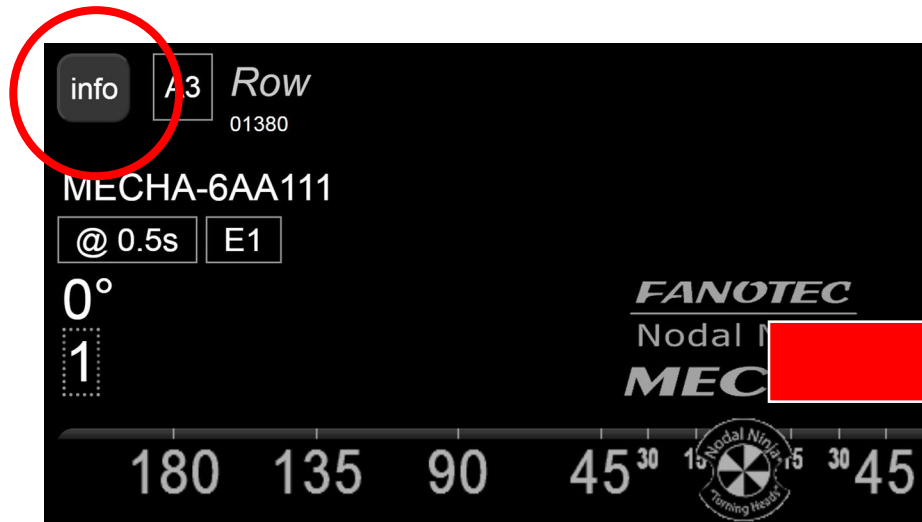
192.168.8.1 says

No update found.

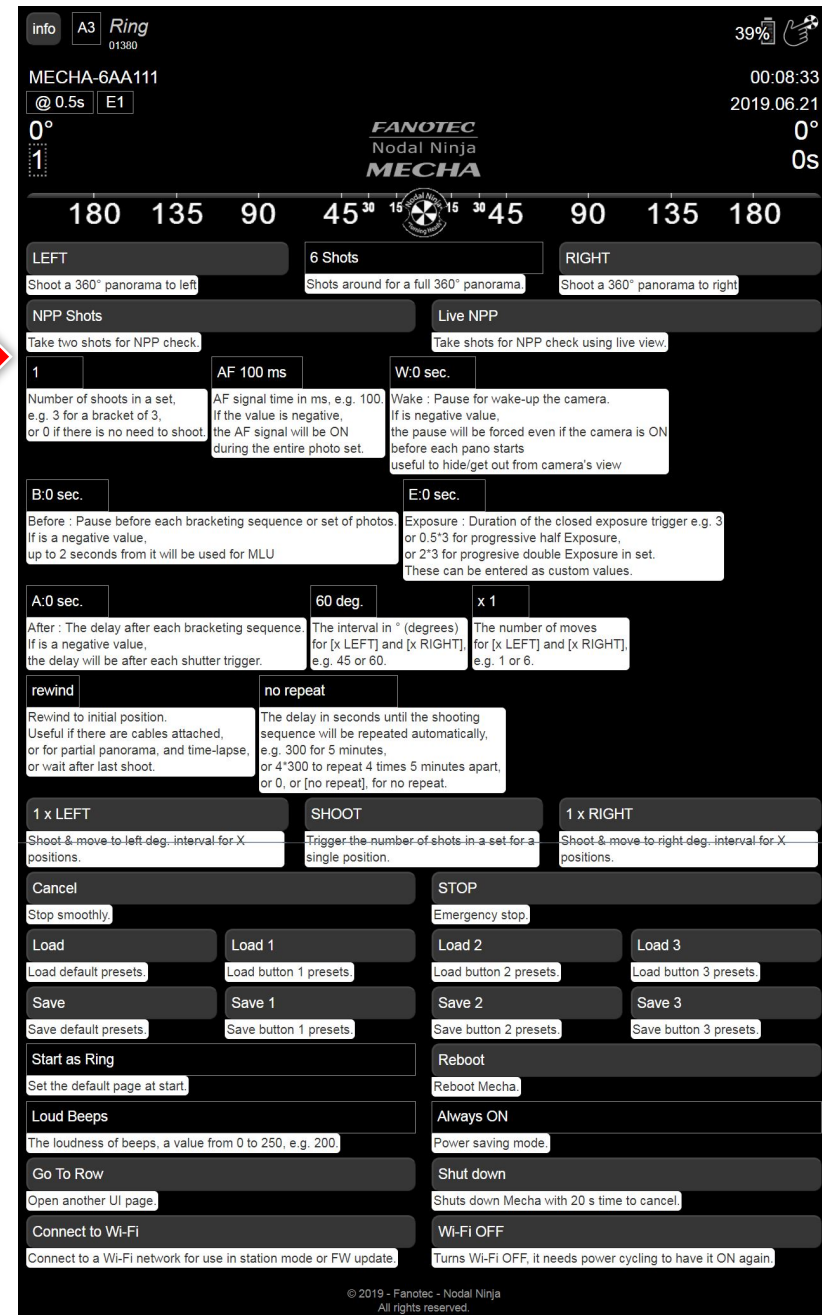
OK

## Page Navigation





Clicking on the **INFO** button will toggle description for all the controls.





# MORE INFO, LINKS & SPECS

---

## Specifications:

NCR18650GA high capacity lithium-ion batteries, 7.2v, 3350mAh, 12Wh. (Always observe proper safety precautions when using products with lithium-ion batteries).

Total weight of Mecha Rotator E1 + Single Axis Controller C1 approx. 17.35 oz (492g).

Supports up to 3.3lbs (1.5 kg) vertical loading, including pano-head, and 1.0Nm turning torque (center of gravity is 8cm from pivot).

- Safety Precautions Mecha Lithium-ion batteries - <http://bit.ly/mecha-safety>

## Mecha support safe links:

- Making HDR Pano and Time-lapse Using MECHA - <http://bit.ly/mecha-hdr-tl>
- Making HDR Pano and Time-lapse Using MECHA Mind Map - <http://bit.ly/mecha-hdr-tl-mind-map>
- Finding the No-Parallax-Point Using Live NPP - <http://bit.ly/mecha-live-npp>
- Remote Shutter Release Cable Compatibility List (compatible cameras) - <http://bit.ly/mecha-cables>
- Accessing the Web Control Interface of Mecha - <http://bit.ly/mecha-access>
- How to update Mecha Controller firmware - <http://bit.ly/mecha-firmware>
- Support Questions and assistance - <http://bit.ly/mecha-forum>

How we will assign versions for the Mecha E1 Rotator with Controller C1 QRG.

- v0.1 First draft released to get the user up and running with basic functionality.
- v0.1.1 / v0.1.2 / v0.1.3 etc. - Minor tweaks to text and images may occur which do not affect performance.
- v0.2 / v0.3 / v0.4 etc. - Changes or additional features added which may affect or enhance the actual operation. **(important update)**
- v1.0 The QRG has reached a level that we feel covers most of the basic functionality.
- v1.1.1 / v1.1.2 / v1.1.3 etc. - Minor tweaks to text and images may occur which do not affect performance.
- v1.1 / v1.2 / v1.3 etc. - Changes or additional features added which may affect or enhance the actual operation. **(important update)**
- v2 - Major update **(important)**

To view the latest revision of this Quick Reference Guide scan the QR Code or visit: <http://bit.ly/nn-manuals>

Developed and manufactured by Fanotec. Manufacturer of Nodal Ninja Branded Products.

<https://nodalninja.com>

Address: Flat 2, 4/F, Kar Wah Indl. Bldg. 8 Leung Yip Street Yuen Long, Hong Kong

Look for an authorized dealer near you visit: <http://bit.ly/nn-dealers>